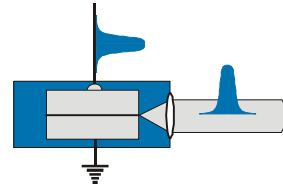
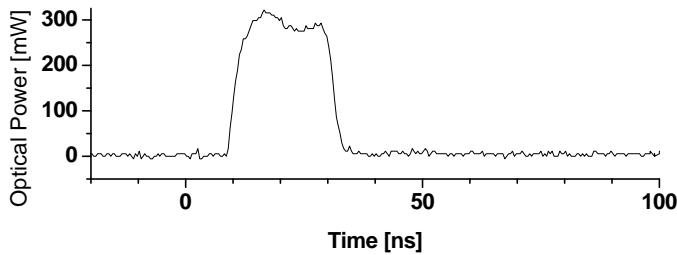


# Cat Series: SYS-040-0780-300



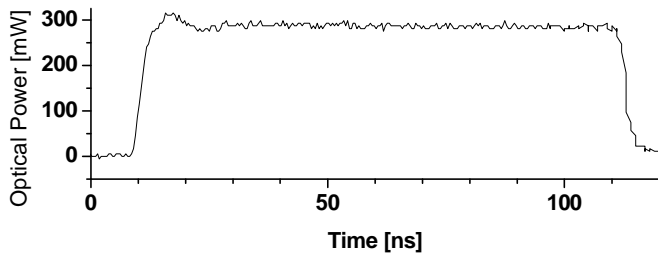
## Description:

The SYS-040-0780-300 is a microcontroller operated pulsed laser light source. It is especially designed for rectangular pulse operation. All functions can be operated by remote control.



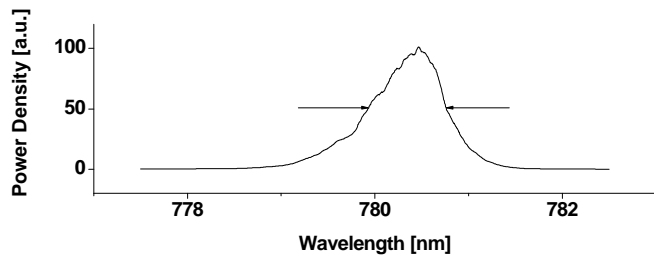
### Minimum Pulse Width

Pulse Width: 20ns  
Peak Power: 300mW  
Pulse Energy: 6.7nJ



### Maximum Pulse Width

Pulse Width: 100ns  
Peak Power: 300mW  
Pulse Energy: 30.1nJ



### Optical Spectrum

Center Wavelength: 780.4nm  
FWHM: 0.83nm

(measured at rep rate 1MHz,  
pulse width 100ns)

<b>Specification:</b>	Peak Output Power / Pulse Energy	> 300mW, > 25nJ				
	Wavelength	770nm ... 790nm				
	Beam Divergence	< 5 mrad				
	Beam Quality M <sup>2</sup>	< 1.5				
	Pulse Length	20ns	40ns	60ns	80ns	100ns
	Maximum Repetition Rate	25MHz	12.5MHz	8.3MHz	6.2MHz	5MHz
	Minimum Repetition Rate	16kHz for all pulse lengths				

Document: <http://data.sacher-laser.com/CAT/CA0780300.pdf>  
Note: Specification are subject to change without further notice.

