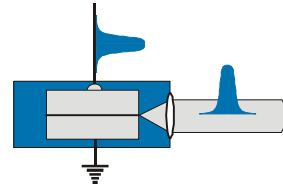
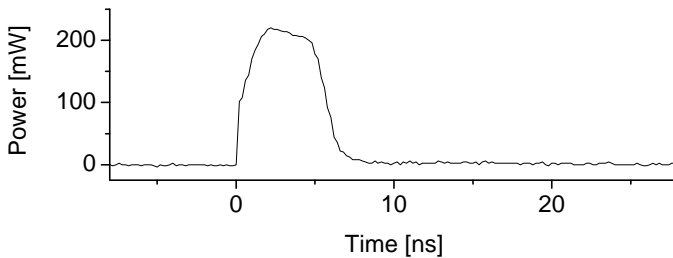


Cat Series: SYS-040-0850-200



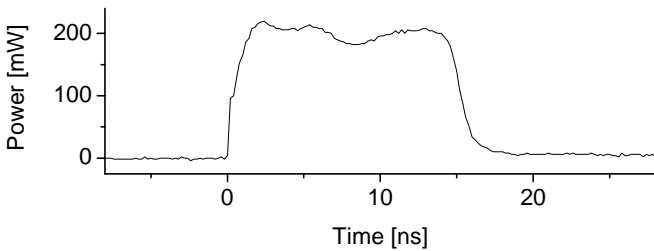
Description:

The SYS-040-0850-200 is a microcontroller operated pulsed laser light source. It is especially designed for rectangular pulse operation. All functions can be operated by remote control.



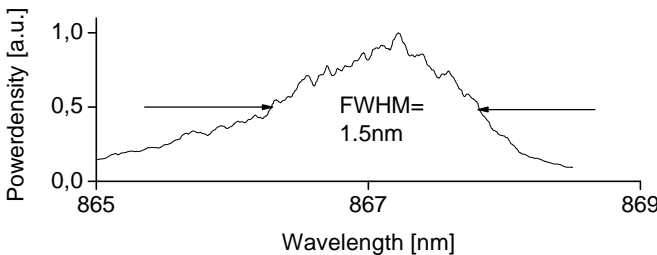
Minimum Pulse Width

Pulse Width: 5ns
 Peak Power: 200mW
 Pulse Energy: 1.1nJ



Maximum Pulse Width

Pulse Width: 15ns
 Peak Power: 200mW
 Pulse Energy: 3.1nJ



Optical Spectrum

Center Wavelength: 867nm
 FWHM: 1.5nm

(measured at rep rate 1MHz,
 pulse width 5ns)

Specification:	Peak Output Power / Pulse Energy	> 200mW, > 2.5nJ			
	Wavelength	830nm ... 870nm			
	Beam Divergence	< 5 mrad			
	Beam Quality M ²	< 1.5			
	Pulse Length	5ns	7.5ns	10ns	12.5ns 15ns
	Maximum Repetition Rate	67MHz	67MHz	44MHz	33MHz 33MHz
	Minimum Repetition Rate	16kHz for all pulse lengths			

Document: <http://data.sacher-laser.com/CAT/CA0850200.pdf>
 Note: Specification are subject to change without further notice.

